

**ÜBERSICHTSZEICHNUNG**  
**ASSEMBLY DRAWING**

**LAPIERRE**



**E-ZESTY CF (MY23)**

Datum: 05-07-2022

Version: 01





E-ZESTY CF (MY23)

date: 05-07-2022

version: 01

# HOW TO USE EXPLODED VIEW

BOM-ID	Description	Specification	Torque	QTY	Service Kit nr.
1	Counter sunk screw (Set)	IS2 - M3 x 8 mm	1 Nm	2	KHB00025  

“ You can click on the logo according to your part's supplier. It will take you to the purchase page. ”

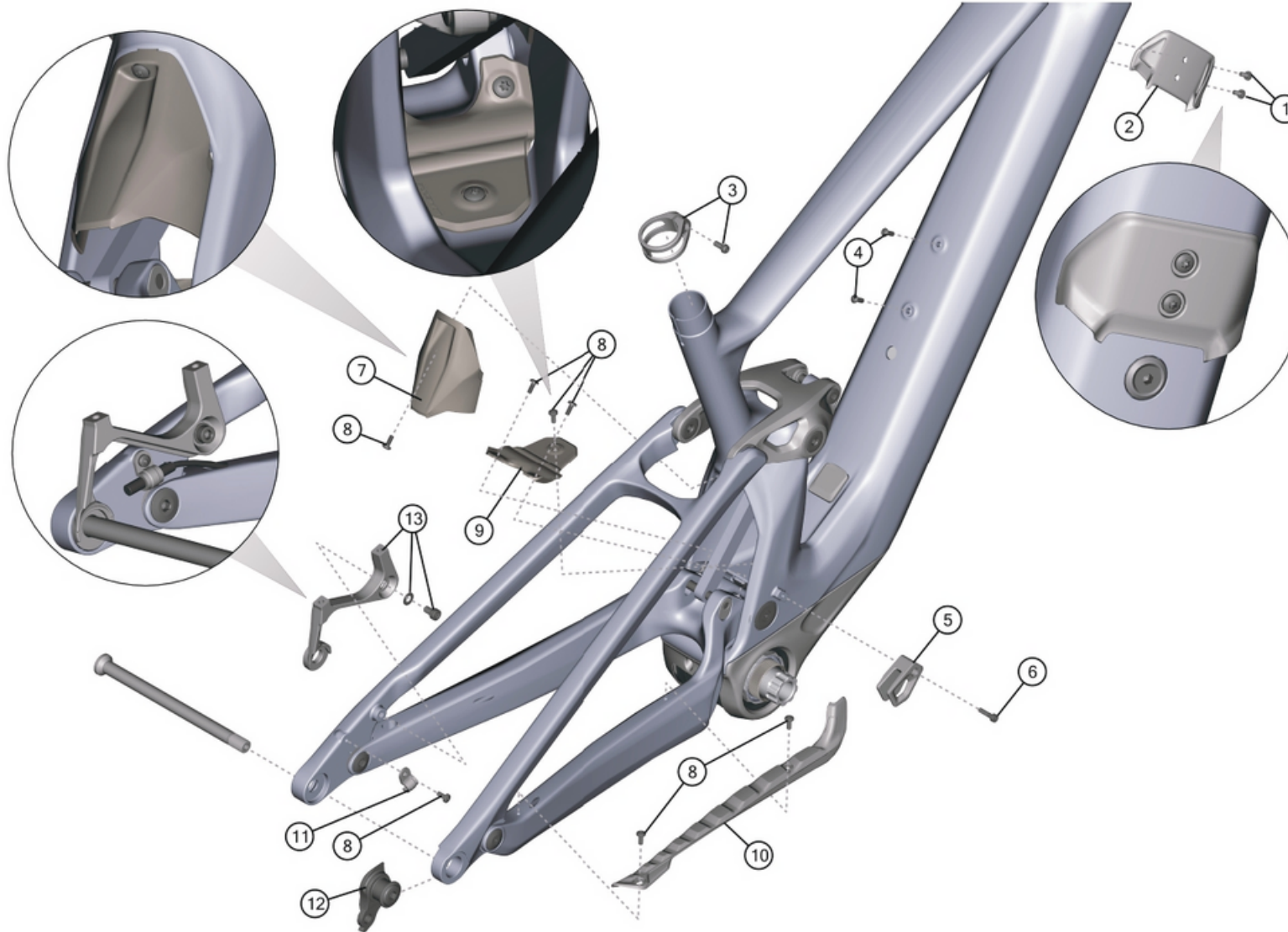


The screenshot shows a product page with a navigation menu at the top, a search bar, and a breadcrumb trail: Accueil / Rechercher / Vélos / Service Kits / JEU DE SUPPORTS ENTRÉE DE CÂBLES MOTEUR YAMAHA E-BIKE HAIBIKE ALLTRACK GAUCHE/DROITE NOIR. The product image shows several black plastic cable support brackets. The product title is 'JEU DE SUPPORTS ENTRÉE DE CÂBLES MOTEUR YAMAHA E-BIKE HAIBIKE ALLTRACK GAUCHE/DROITE NOIR 2023'. Below the title, it says 'TRK ALLTRACK YAMAHA CABLE INLET SET' and 'Comprend: support d'entrée de câbles gauche et droite, vis.' The product number is KHB00025, the barcode is 8715957603410, and the supplier reference is KHB00025. The price is listed as 'Prix public € 9,99'. At the bottom, there is a quantity selector set to '1' and a 'Commander' button.

# ÜBERSICHTSZEICHNUNG


ASSEMBLY DRAWING front and rear triangle

# LAPIERRE



**Hinweis:** Bei den Schrauben muss mittelfeste Gewindesicherung verwendet werden. Rote Flächen müssen gefettet werden.

**Note:** use medium strength screw lock for screw threads. red surfaces has to be greased.

 > medium strength screwlock






















E-ZESTY CF (MY23)  
date: 05-07-2022  
version: 01

# ÜBERSICHTSZEICHNUNG

## ASSEMBLY DRAWING front and rear triangle

# LAPIERRE

BOM-ID	Description	Specification	Torque	Service kit	QTY
1	Screw	M5			2
2	Fork bumper			KLP00019  	1
3	Seatclamp incl. screw	Ø34,9/hex key 4 - M5 x 12 mm		KLP00022  	1
4	Lens head screw	hex key 3 - M5 x 12 mm	6 Nm		2
5	Chain guide			KLP00020  	1
6	Cylinder head screw	M4		KLP00020  	1
7	Shock fender			KLP00017  	1
8	Button head screw (stainless steel)	TX20 - M4 x 10 mm		KLP00017  	7
9	Main pivot mudguard			KLP00017  	1
10	Chainstay protector			KLP00016  	1
11	Speed sensor holder			KLP00021  	1
12	UDH derailleur hanger + nut	Don't grease the thread!	25 Nm	 	1
13	Rear brake mount adapter incl. cylinder head screw and washer	hex key 5 - M6 x 16 mm Ø 6,4 mm	11 Nm	KLP00015  	1



E-ZESTY CF (MY23)

date: 05-07-2022

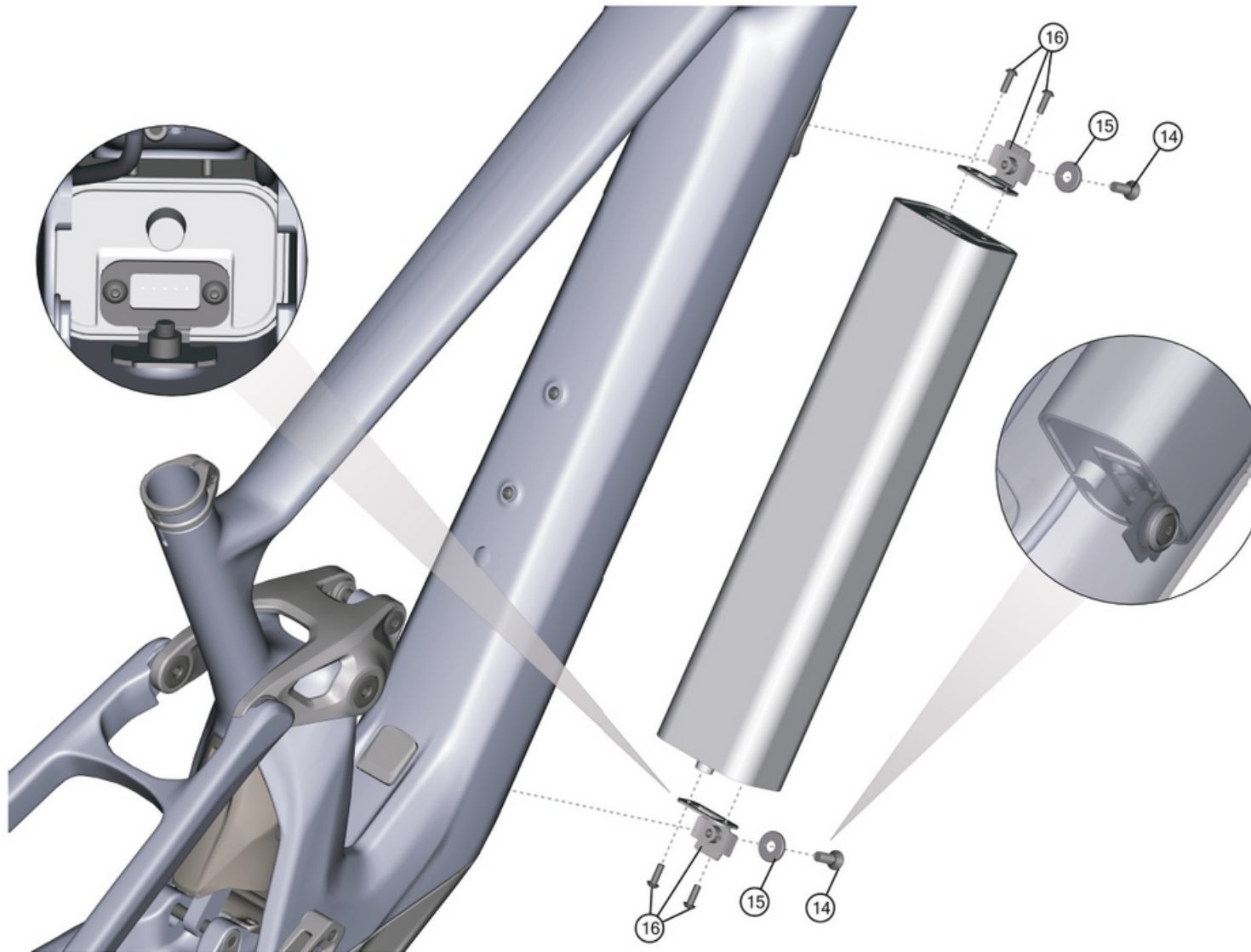
version: 01



# ÜBERSICHTSZEICHNUNG

ASSEMBLY DRAWING battery mount

# LAPIERRE



**Hinweis:** Bei den Schrauben muss mittelfeste Gewindesicherung verwendet werden. Rote Flächen müssen gefettet werden.

**Note:** use medium strength screw lock for screw threads. red surfaces has to be greased.



> medium strength screwlock



E-ZESTY CF (MY23)

date: 05-07-2022

version: 01

# ÜBERSICHTSZEICHNUNG

## ASSEMBLY DRAWING battery mount

# LAPIERRE

BOM-ID	Description	Specification	Torque	Service kit	QTY
14	Counter sunk screw	hex key 4 - M6 x 18 mm	8 - 10 Nm		2
15	Washer	ø 6,4 mm			2
16	battery fix mount incl screws				2



E-ZESTY CF (MY23)

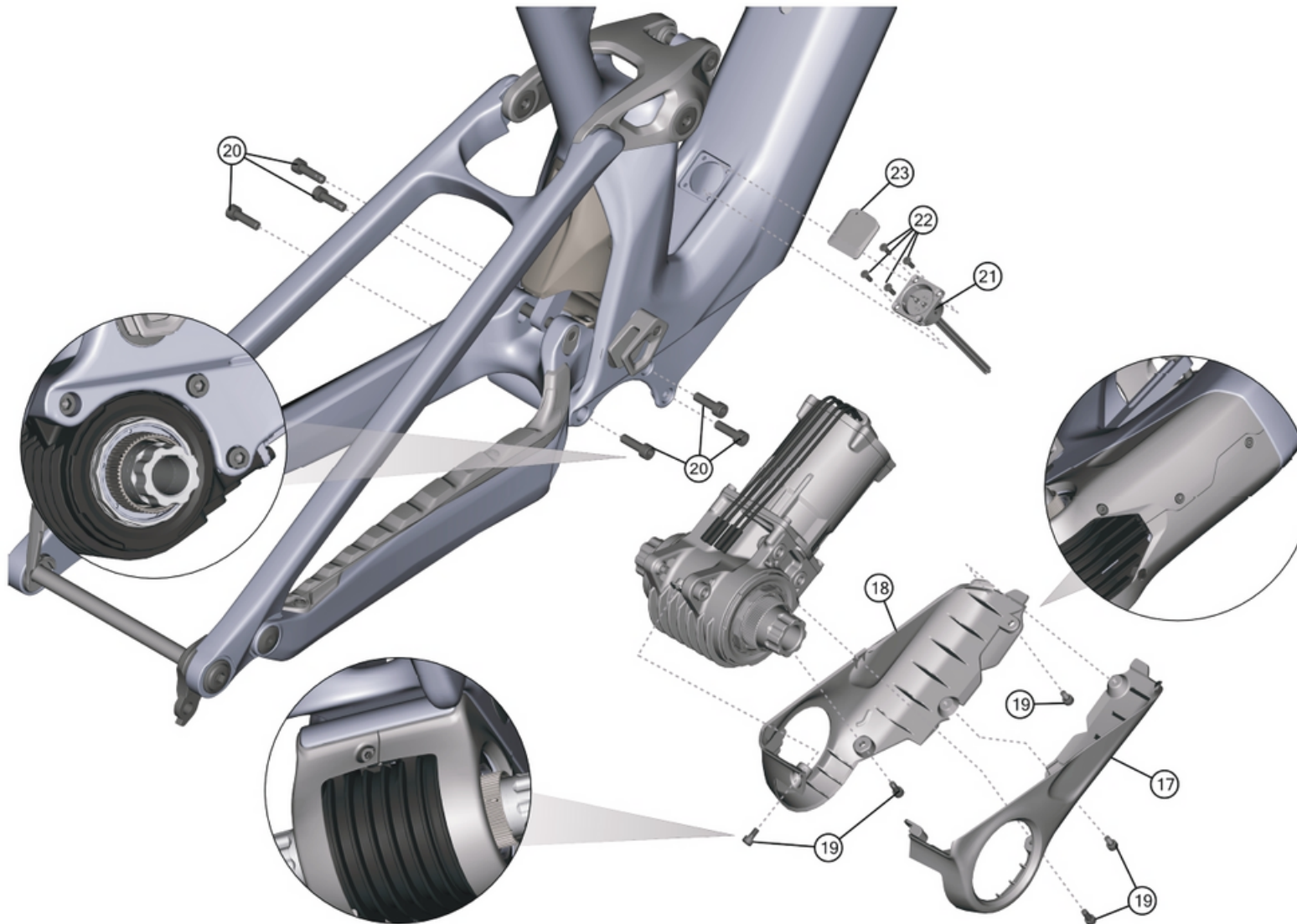
date: 05-07-2022

version: 01

# ÜBERSICHTSZEICHNUNG

ASSEMBLY DRAWING motor mount

# LAPIERRE



**Hinweis:** Bei den Schrauben muss mittelfeste Gewindesicherung verwendet werden. Rote Flächen müssen gefettet werden.

**Note:** use medium strength screw lock for screw threads. red surfaces has to be greased.



> medium strength screwlock



E-ZESTY CF (MY23)







date: 05-07-2022

version: 01

# ÜBERSICHTSZEICHNUNG

## ASSEMBLY DRAWING motor mount

# LAPIERRE

BOM-ID	Description	Specification	Torque	Service kit	QTY
17	Motor cover right side			KLP00018  	1
18	Motor cover left side			KLP00018  	1
19	Cylinder head screw	hex key 3 - M4 x 8 mm		KLP00018  	5
20	Cylinder head screw	TX30 - M6 x 18 mm	10 Nm	Fazua 60A114000A	6
21	Charge port			Fazua 61A102000A	1
22	Countersunk head screw	hex key 2 - M3 x 10 mm	1 Nm		4
23	Charge port cover			Fazua 61A105000A	1



E-ZESTY CF (MY23)

date: 05-07-2022

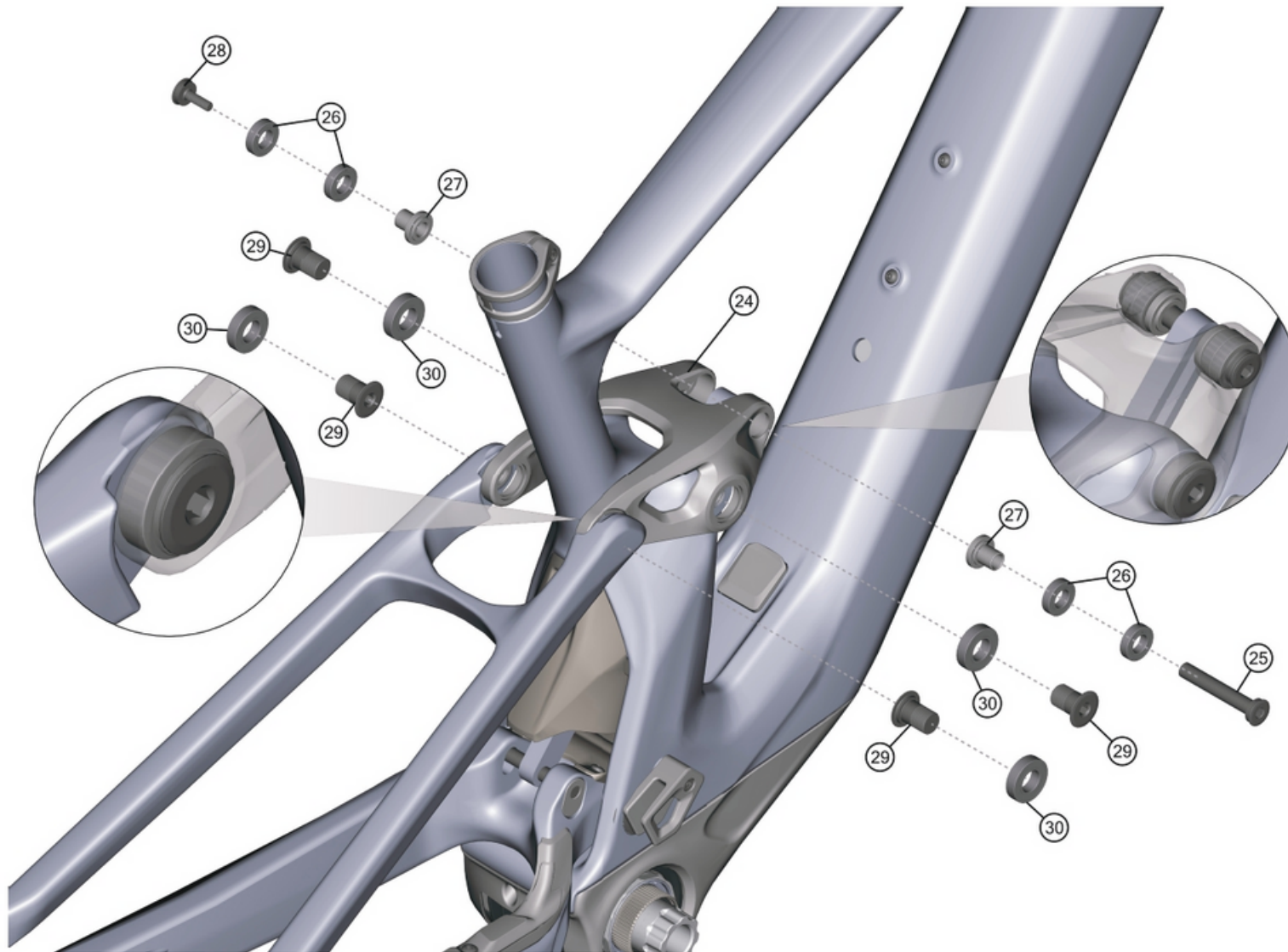
version: 01



# ÜBERSICHTSZEICHNUNG

ASSEMBLY DRAWING    rockerlink

# LAPIERRE



**Hinweis:** Bei den Schrauben muss mittelfeste Gewindesicherung verwendet werden. Rote Flächen müssen gefettet werden.

**Note:** use medium strength screw lock for screw threads. red surfaces has to be greased.



> medium strength screwlock

















E-ZESTY CF (MY23)  
date: 05-07-2022  
version: 01

# ÜBERSICHTSZEICHNUNG

## ASSEMBLY DRAWING

rockerlink

# LAPIERRE

BOM-ID	Description	Specification	Torque	Service kit	QTY
24	Link			KLP00014  	1
25	Shock axle-link			KLP00012  	1
26	Bearing 6800	Ø 19 x 10 x 5 mm		KLP00013  	4
27	Shock washer			KLP00012  	2
28	Shock screw-link			KLP00012  	1
29	Link screw			KLP00012  	4
30	Bearing 6901	Ø 24 x 12 x 6 mm		KLP00013  	4



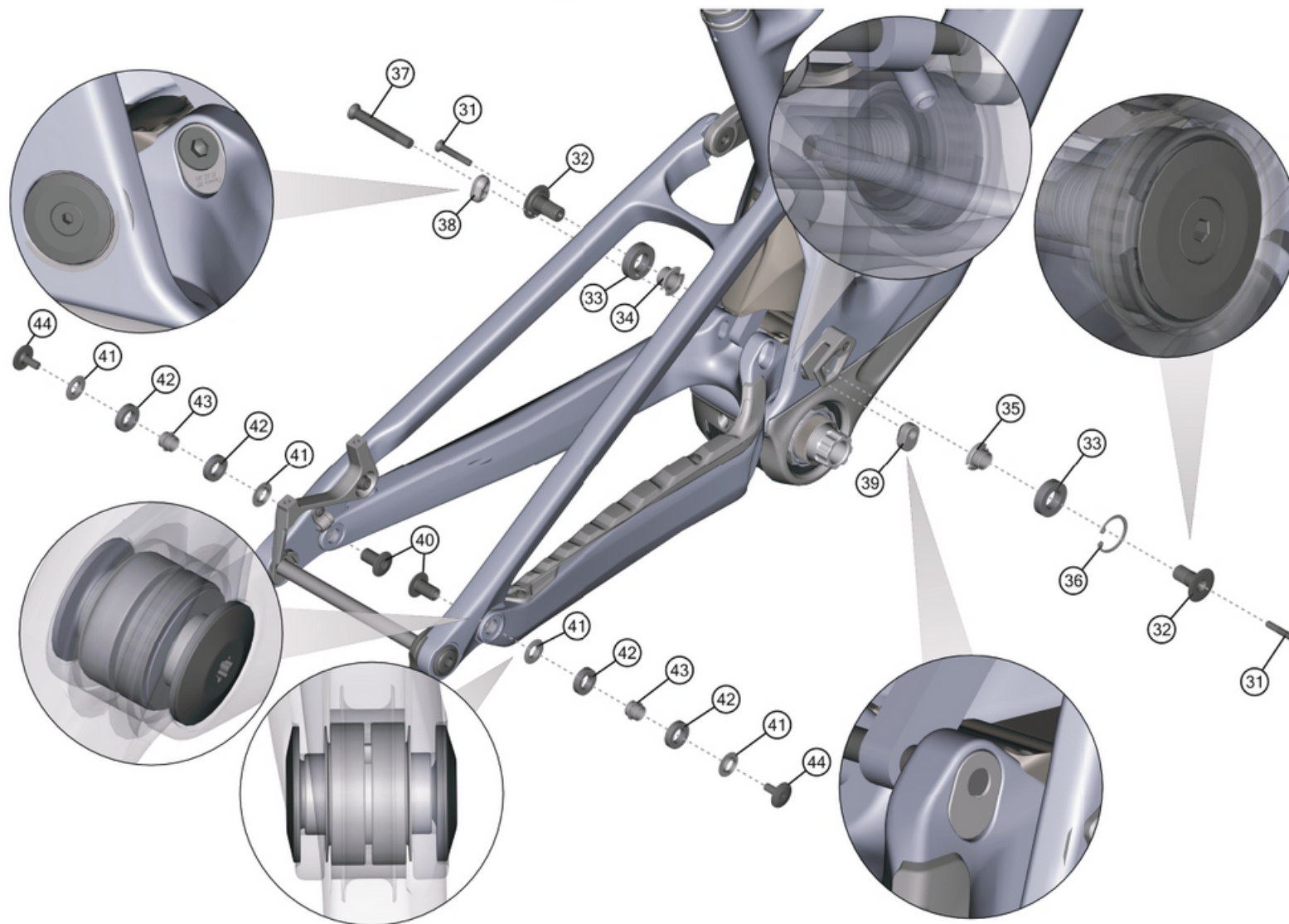
E-ZESTY CF (MY23)  
date: 05-07-2022  
version: 01

# ÜBERSICHTSZEICHNUNG

ASSEMBLY DRAWING

main pivot / flipship / chainstay-seatstay

# LAPIERRE



**Hinweis:** Bei den Schrauben muss mittelfeste Gewindesicherung verwendet werden. Rote Flächen müssen gefettet werden.

**Note:** use medium strength screw lock for screw threads. red surfaces has to be greased.



> medium strength screwlock



E-ZESTY CF (MY23)

date: 05-07-2022

version: 01

# ÜBERSICHTSZEICHNUNG

## ASSEMBLY DRAWING main pivot / flipship / chainstay-seatstay

# LAPIERRE

BOM-ID	Description	Specification	Torque	Service kit	QTY
31	Countersunk main pivot lock			KLP00012  	2
32	Main pivot screw			KLP00012  	2
33	Bearing 6902	Ø 28 x 15 x 7 mm		KLP00013  	2
34	Main pivot spacer left side			KLP00012  	1
35	Main pivot spacer right side			KLP00012  	1
36	Circlip			KLP00012  	1
37	Flipship axle			KLP00012  	1
38	Flipship washer			KLP00012  	1
39	Flipship nut			KLP00012  	1
40	Axle SST-CST			KLP00012  	2
41	Washer SST-CST			KLP00012  	4
42	Bearing 6801	Ø 21 x 12 x 5 mm		KLP00013  	4
43	Spacer SST-CST			KLP00012  	2
44	Screw SST-CST			KLP00012  	2



E-ZESTY CF (MY23)

date: 05-07-2022

version: 01



# ÜBERSICHTSZEICHNUNG

## ASSEMBLY DRAWING

# LAPIERRE

FACT SHEET:	
SHOCK LENGTH:	205 MM
SHOCK HARDWARE TOP:	20 MM x M8
SHOCK HARDWARE BOTTOM:	30 MM x M8
HEADSET TOP:	ZS 56
HEADSET BOTTOM:	ZS 56
SEATPOST DIAMETER:	31,6 MM
CLAMP INNER DIAMETER:	34,9 MM
BOTTOM BRACKET:	-----
KICKSTAND:	-----
ISCG STANDARD:	-----
CARRIER MOUNT:	NO
FENDER COMPATIBLE:	NO

DROPPER SEATPOST READY:	YES
WATERBOTTLE MOUNT:	1x 0,5 L
MAXIMUM PERMISSIBLE TOTAL WEIGHT:	120 KG
MAXIMUM TIRE SIZE:	
WHEEL SIZE:	29" / 27,5"
QUICK RELEASE LENGTH:	177,5 MM
OVER-LOCKNUT DIMENSION (O.L.D.):	148 MM
FD CLAMP SIZE:	-----
FD TYPE:	-----
ENGINE:	Fazua Ride60
BATTERY:	Fazua 420 WH
DISPLAY:	Remote FX



E-ZESTY CF (MY23)  
date: 05-07-2022  
version: 01